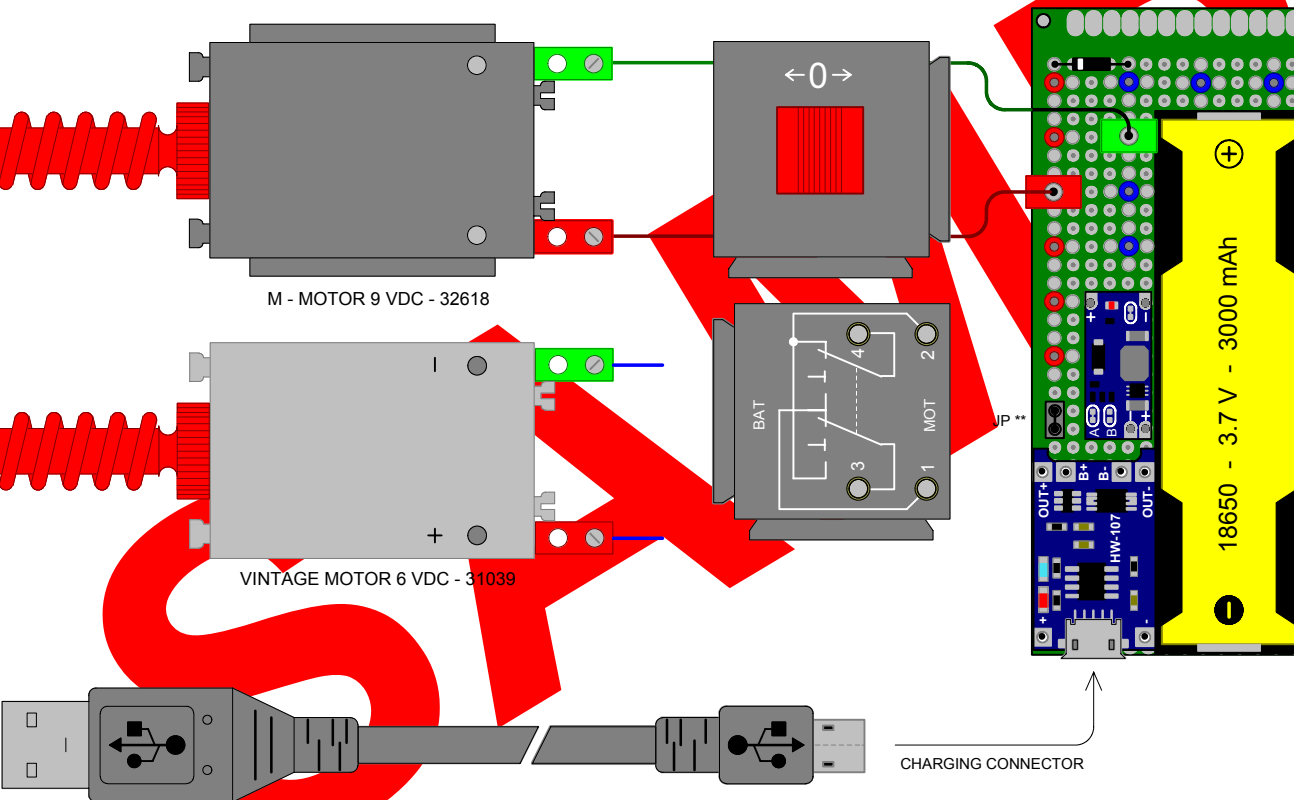
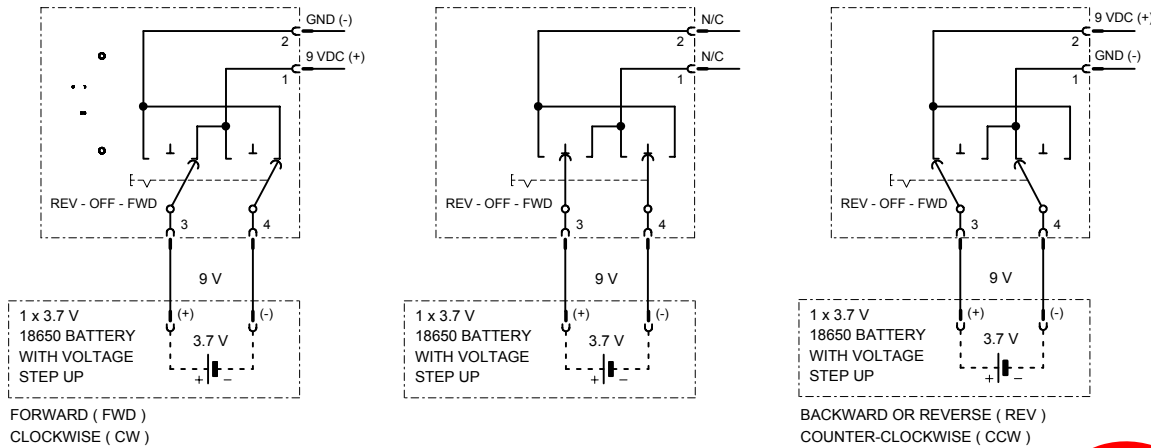
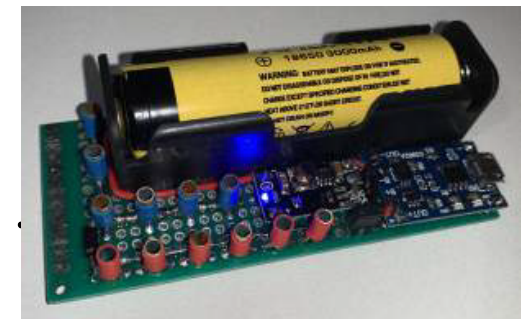
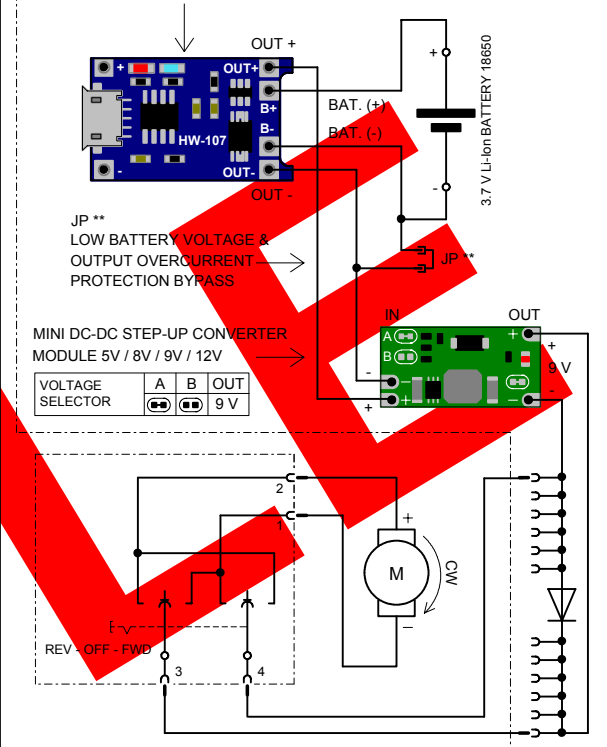


3.7 V LiION BATTERY WITH CHARGER, STEP-UP MODULE AND POLARITY CHANGEOVER SWITCH - PN: 36708 (PRINCIPAL SCHEMATICS)



TP4056 (HW-107) LIION BATTERY CHARGING MODULE:



FIGURES ARE APROXMIATELY, DUE TO COMPONENT TOLERANCES!
MOTOR RPM & AND MOTOR CURRENT ARE STRONGLY DEPENDING ON THE AGE OF THE MOTOR. POLARITY OF MOTOR CONNECTOR VARIES.
FOR FULLY COMPONENT SPECS. SEE MANUFACTURER DATASHEETS.
BRANDS AND NAMES ARE MENTIONED PURELY FOR INFORMATION PURPOSES.

STEM-E02	A4	udo@elgers.com	ue-ERT20240109-15	09-JAN-2024
015	A	3.7 VOLT LiION CHARGER WITH VOLTAGE STEP-UP		